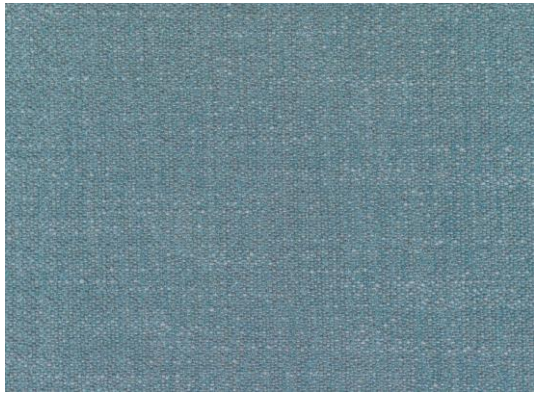


Technical Information



Ecriture 600751

Type: Upholstery

Composition: 40% polyacrylic / 9% linen / 27% polyester / 18% viscose / 6% cotton

Yarn Type: Staple / Filament

Binding: Plain weave

Width: App. 140 cm / 55 inches

Weight: App. 1035 g / 33 oz (per running meter)

Repeat: -

Colour difference may occur

Abrasion

App. 70.000 Martindale rubs
EN ISO 12947

Abrasion test results exceeding ACT performance guidelines are not an indicator of product lifespan. Multiple factors affect fabric durability and appearance retention

Pilling

Note 4-5, EN ISO 12945-02

Seam slippage

Seam parallel to warp: 2 mm parallel to weft 3 mm, EN 13 936-2 180 Newton

Colour fastness to light

Note 5-6, EN ISO 105-B02

Fastness to rubbing

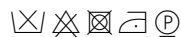
Dry note 4-5, ISO 105-X12

Wet note 3-4 ISO 105-X12

Shrinkage

App 1%

Care Instruction



Warranty

10^{year}
warranty

Flame Resistance

EN 1021-1/2

BS 5852 Part 1

US Cal. Bull. 117-2013

With flame retardant treatment:

BS 5852 source 5

Environmental Benefits

Complies with REACH regulation

Follows the EU Ecolabel dye restrictions, including AZO dyes and heavy metal restrictions

Green building certificates

Greenguard Gold: low chemical emission

Environmental Product Declaration (EPD): Based on LCA following EN 15804 and follow the standard of ISO 14040

Country of origin

Italy