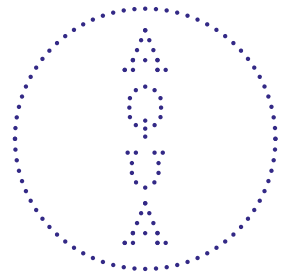


Hanging & Bulb Changing Instructions



Dippa
Designed by Aqua Creations



Aqua Creations
Lighting & Furniture Atelier

Aqua Creations Lighting & Furniture Atelier

Dippa

Silk Care Instructions

For optimal maintenance vacuum the silk frequently (make sure the vacuum cleaner is at low suction and use a clean attachment) and avoid direct sunlight or smoke. To remove stains use upholstery foam cleaner (as these vary from country to country, testing the product on a hidden spot first is recommended). In case of heavier dirt use a moist sponge and make sure to move it along the crushed line of the silk.

Please do not clean coated lamps with water.

Note that any good quality silk fibers weaken when exposed to sun and natural dyes may fade. Hence, avoid direct sunlight on the silk lights.

220-240 V Model

CFL Screw-in 1 x 28W bulb

Optional:

CFL Screw-in dimmable [Type A] 1 x 23W bulb

CE Certified

120 V Model

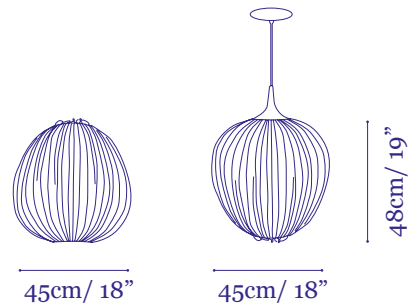
CFL Screw-in dimmable [Type A] 1 x 23W bulb

UL Listed

Package

Volume: 52 x 52 x 62cm, 20 x 20 x 24"

Weight: 5.5kg / 12lb



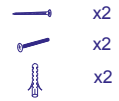
Aqua Creations
Lighting & Furniture Atelier

Hanging Instructions Dippa Pendant

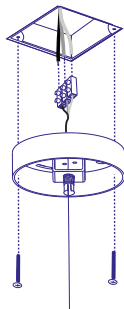
Important: the lamp assembly and electrical work should be carried out by a qualified electrician. The Lamp shade's cover should be taken off only after the installation.

Note: Prior to installation, adjust the height of the suspension by cutting the desired length of the electric cable.

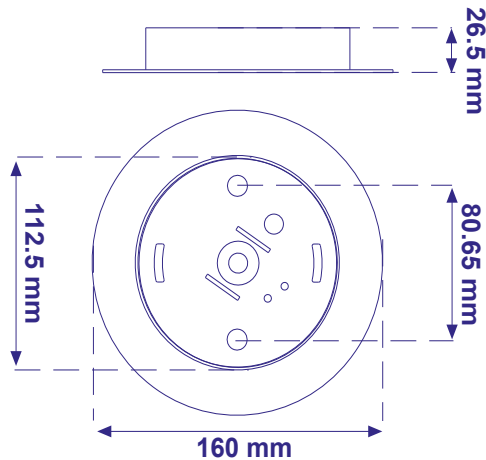
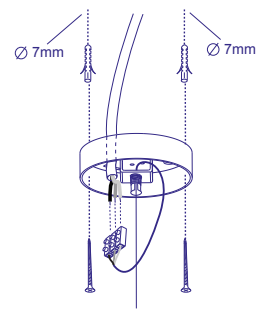
Parts Included:



Option A.
(U.S.A)

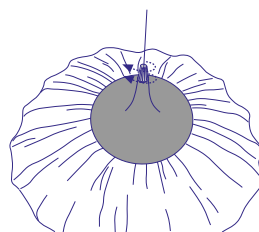
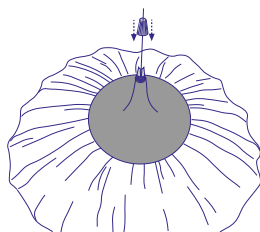
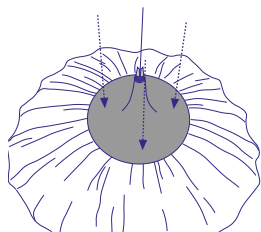
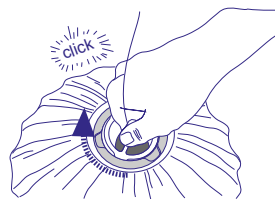
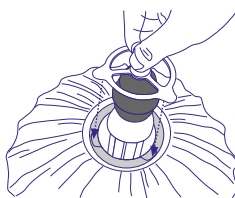
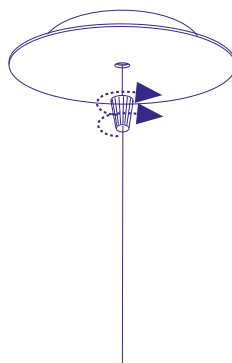
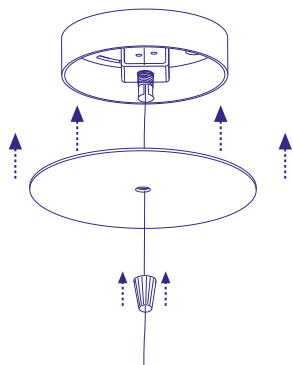


Option B.
(EUROPE)



Aqua Creations
Lighting & Furniture Atelier

Hanging Instructions Dippa Pendant



Aqua Creations
Lighting & Furniture Atelier

Bulb Changing Instructions Dippa Pendant

