

m o o o i[®]

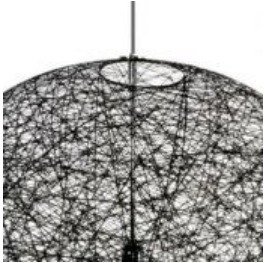


Random Light

Designed by Bertjan Pot and introduced in the Moooi collection in 2002, the Random Light has become a best seller right from the beginning.

Designer	Bertjan Pot
Year of design	2001
Material	fibreglass soaked in epoxy resin, chromed steel pendant

detailing

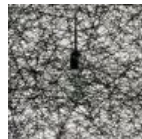


The Random light has a small opening to help with replacing the light bulb.

colours



White



Black

technical (Incandescent version)



E27 x I
60 W MAX type G
Cable length 4M (black)
10M cable available on request
Plastic white canopy (white shade)
Plastic black canopy (black shade)



E26 x I
60 W MAX type G
Cable length 4M (black)
10M cable available on request
Chrome canopy

technical (LED version)



small Random LED (CE)

Power consumption 8,75W (72lm/W)
Colour temperature (degrees Kelvin, K) 2700K
(warm white)
Luminous flux (Lumen, lm) 636lm

medium Random LED (CE)

Power consumption 11,5W (75lm/W)
Colour temperature (degrees Kelvin, K) 2700K
(warm white)
Luminous flux (Lumen, lm) 863lm

large Random LED (CE)

Power consumption 11,5W (75lm/W)
Colour temperature (degrees Kelvin, K) 2700K
(warm white)
Luminous flux (Lumen, lm) 863lm

general Random LED (CE)

Input voltage of 240V ~ 50Hz/ 60 Hz AC
Power supply included in canopy
Cable length 4M (black)
10M cable available on request
Plastic white canopy (white shade)
Plastic black canopy (black shade)
The average service life of Random light LED is 50,000 hours, while maintaining +70% of the light output.

technical UL (LED version)



small, medium & large random LED (cULus)

Power consumption 11.3W (42.9lm/W)
Colour temperature (degrees Kelvin, K) 2600K
(warm white)
Luminous flux (Lumen, lm) 485lm

Input voltage of 110V ~ 60Hz AC
Power supply included in canopy
Cable length 4M (black)
10M cable available on request
Metal matt white canopy (white shade)
Metal matt black canopy (black shade)
The average service life of Random light LED is 50,000 hours, while maintaining +70% of the light output.



Recommended dimmer specs

For fluent dimming behaviour we advise a dimmer that is compatible with the following specs:

Transformer type: Electronic Low Voltage (ELV)

Load type: Capacitive load (C-Type)

Dimmer type: Trailing edge / Reverse phase

Please note the functioning of the dimmer and the power supply combination can never be predicted, it always needs to be tested in practice.

packaging

random light small & random light LED small

H 53 cm | 20.9"

W 51 cm | 20.1"

D 51 cm | 20.1"

Colli 1/1

Product weight:

1,2 KG | 2,6 lb

With packaging:

2,7 KG | 6 lb

random light medium & random light LED medium

H 88 cm | 34.6"

W 87 cm | 34.3"

D 87 cm | 34.3"

Colli 1/1

Product weight:

1,8 KG | 4 lb

With packaging:

6,2 KG | 13,7 lb

random light large

H 110 cm | 43.3"

W 110 cm | 43.3"

D 110 cm | 43.3"

Colli 1/1

Product weight:

2,5 KG | 5,5 lb

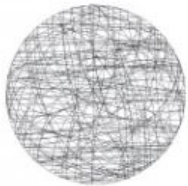
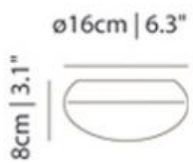
With packaging:

13 KG | 28,7 lb

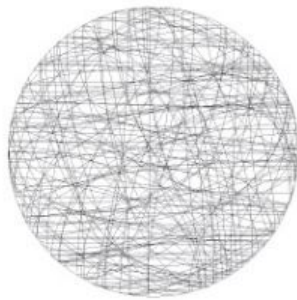
cleaning instructions

Due to the intricacy of the Random light it is advised to regularly use a feather duster to remove dust particles.

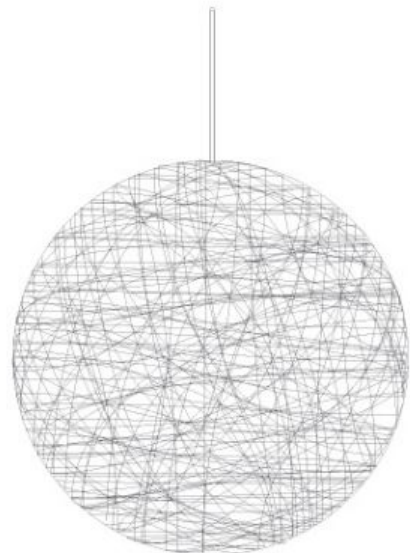
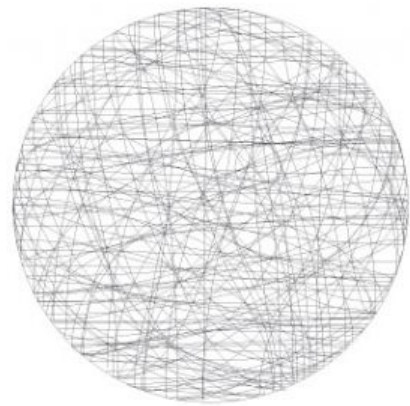
dimensions



50cm | 19.7"



80cm | 31.5"



105cm | 41.3"