

m o o o i[®]



Lolita Table Lamp

by Nika Zupanc

Who is afraid of pink? My imagination chases female archetypes intentionally. Frivolous, even naive objects are my favorite victims. And when, during such a process, I manage to be creative in an evidently reserved way, I then touch the purest meaning of my work and frivolity becomes timeless elegance. Lolita is here to play with your emotions. She is here to break your everyday routine.

Designer	Nika Zupanc
Year of design	2008
Material	Injection moulded ABS shade, polyurethane base

m o o o i[®]

detailing



The Lolita shade is characterized by a dainty polka dot edge.
Inside the Lolita shade lies a warm white glow.

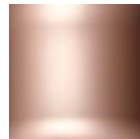
colours



white
RAL 9016



pink
RAL 3015



London Rosé

technical



E14 x I
25 W MAX type B
Cable length 1,5M (transparant)
Europlug



E12 x I
25 W MAX type B
Cable length 1,5M (black)
US 2-pin plug



packaging

H 46 cm | 18.1"

W 46 cm | 18.1"

D 93 cm | 36.6"

Colli 1/1

Product weight:

2,5 KG | 5,5 lb

With packaging:

4,7 KG | 10,4 lb

cleaning instructions

Can be effectively cleaned using a regular household dust cloth or feather duster. Lightly dust inbetween each component when the lamps are not in use. Moooi recommends always reading the label of any cleaning products you wish to use on or near any item from the Moooi collection. For further information on how to clean this product please contact your nearest Moooi agent or dealer which can be located through our website.

m o o o i[®]

dimensions

37cm | 14.6"



78cm | 30.7"