

m o o o i[®]



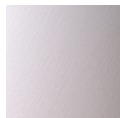
Trix

A neo-classic lamp from the Moooi lighting collection both versatile and charismatic in form and function. The form of the Trix brings a new interesting dimension into your space. None intrusive and beautifully balanced.

Designer	Marcel Wanders
Year of design	1998
Material	PVC/cotton laminate on a metal structure

m o o o i[®]

Colour



White

Technical



E27 x I

60 W MAX type A

Cable length 2,5M (black)



Europlug



E26 x I

60 W MAX type A

Cable length 2,5M (black)

US 2-pin plug

Packaging

H 130 cm | 51.2"

W 32 cm | 12.9"

D 32 cm | 12.9"

Colli 1/1

Product weight:

1,3 KG | 2,9 lb

With packaging:

2,9 KG | 6,4 lb

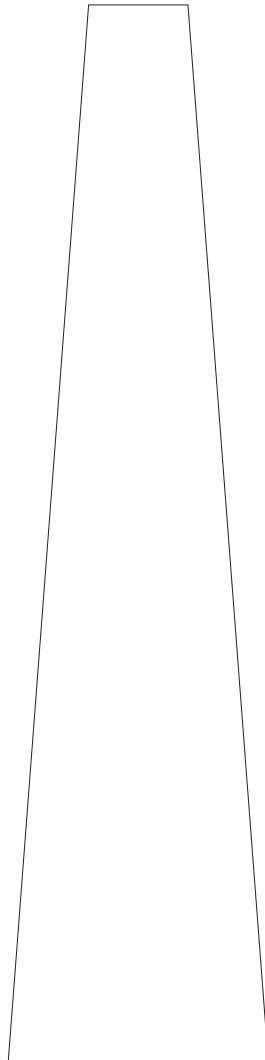
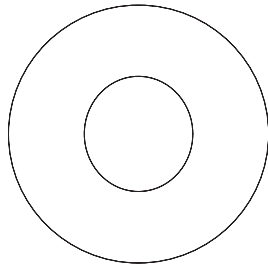
Cleaning Instructions

Trix should be cleaned regularly with a dry cloth or feather duster to prevent a build up of dust. For more stubborn stains use a familiar stain remover that does not contain bleach. Please ensure the light is not connected to the mains electricity supply whilst cleaning is in progress.

m o o o i[®]

Main dimensions

30cm | 11.8"



122cm | 48"